

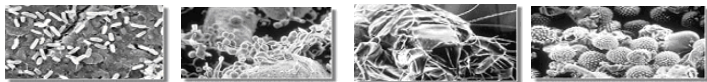
Air Purifier installed inside Lift

Introduction:

Being of the disease facts and health concern of people, we need to provide a hygiene environment for people despite in general public area e.g. lobby, corridor and playground etc... is also included the "Lift"

Situation:

As a transportation / building facility in a building, "Lift" has been classified as a high potential risk area that may increase the chance of "Cross-contamination". Bacteria and virus will easy to expose into the air or stick on the wall or button of the lift panel.



How to select a suitable air purifier for "Lift"

- Being of the high volume of "Air Change" designed for lift (Normally is 30 ACH) – means 30 nos. of air change per hour. We need to select an air purifier can overcome that requirement. E.g. use the air purifier is theory by - Active Type (Diffusion)
- Being of the size volume of lift is less, we need to select an air purifier as small as possible.
- Being of the high occupancy frequency of lift, we should not use an air purifier that need always maintenance or parts replacement works. E.g. theory by – Passive Type (Filter Type)
- Being of the installation position is very close to user, we should not use high noise level air purifier.
- Being of the construction of "Lift", we should not use a heavy weight type air purifier.
- Being of the spare power supply capacity of lift is limited, we should not use an air purifier with high power consume.
- Being of the bacteria and virus may leave in air and also surface of button panel, we should select an air purifier which are "Actively" to purify and sterilize both the moving (Air) and Fix (Surface) object.

Moving Air & Fix Object Sterilizing

Most of an air purifier "Passive Type" on market may effective for moving air purification e.g. UV, TiO₂, HEPA filter, Carbon filter etc.... BUT they can not purify the fix object e.g. surface.

HOW CAN WE PURIFY FIX OBJECT? By "Active Type"

air purifier. Most of the Active Type air purifier on market e.g. Ozone and Plasma Ion type. The machine can diffuse ozone and plasma ion into air rapidly, they'll active to sterilize both the air and also the surface.. Being of the theory by "Diffusion", they'll overcome the requirement of nos. of air change (ACH) including "Lift".

Solution:

The only air purifier designed for "Lift" ----- "Active Type" air purifier

innoclean: Purezone R601

Purify the Moving Air and Fix Object
Theory by: Photoplasma
2 x UVC Sterilizing Lamp, Photocatalytic and Plasma Ion + / -, Ozone (Free on requested)

Functions:
Toxic Chemical remove
Bad odor remove
Bacteria & Virus kill
Dist Particles remove



Installation:

Recommend method

By drill a hole on the wall of Lift and add with a screw into the hole on wall, then easily hold the machine on the screw in back side.

Fastest and Easy method

By fixed with a double side adhesive tape at back of the machine and seal with a normal silicon sealant at the edge of the machine.

(Please check there should be a 220V power supply for the machine connected)

Job photo:

Innoclean – Purezone R601 Inside Lift



Innoclean – Purezone R601 at Lift Lobby:

